

# Table of Contents

Range Hood Options .....	3-5	#8505 ..... Key West.....	Painted.....	40	
#8865 ..... Roberta.....	Aged Stainless.....	6	#2789 ..... Fairhurst .....	Powder-Coated.....	41-42
#4225 ..... Roberta.....	Aged Stainless.....	7	#1303 ..... Fairhurst .....	Aged Zinc.....	41
#1733 ..... Sierra .....	Aged Stainless.....	8	#12056..... Montana.....	Oil Rubbed Bronze.....	43
#6433 ..... Sierra .....	Aged Zinc.....	9	#3875 ..... Pruno.....	Oil Rubbed Bronze.....	44
#975..... Winona .....	Aged Stainless.....	10-11	#11670..... Marion .....	Aged Copper .....	45
#2282 ..... King.....	Aged Stainless.....	12	#2220 ..... Pensliwinky .....	Aged Zinc.....	46
#6404 ..... Denver .....	Aged Stainless.....	13	#2170 ..... Grand Junction ...	Zinc .....	47
#2609 ..... Millennium.....	Aged Stainless.....	14	#6758 ..... Blue Ridge .....	Aged Zinc.....	48
#1501 ..... Sage.....	Aged Stainless.....	15	#2304 ..... McKenzie 1 .....	Aged Zinc.....	49
#17551 ..... Ouray.....	Aged Stainless.....	16	#8492 ..... McKenzie 2 .....	Aged Zinc.....	50
#7753 ..... Cascade .....	Aged Stainless.....	17	#3479 ..... Sandusky .....	Aged Zinc.....	51
#1725 ..... Cascade .....	Stainless.....	18-19	#4025 ..... Homestead.....	Stainless.....	52
#8550 ..... Adirondack.....	Stainless.....	20	#4046 ..... Homestead.....	Copper Vein.....	53
#8610 ..... Manhattan.....	Stainless.....	21	#4037 ..... Homestead.....	Black.....	54
#5137 ..... Manhattan.....	Stainless.....	22	#3848 ..... Homestead.....	Silver Vein .....	55
#8252 ..... Manhattan.....	Stainless.....	23	#1730 ..... Custom Hood .....	Mill Scale Frame.....	56
#1075 ..... Manitoba .....	Stainless.....	24	Office & Kitchen .....	Aged Stainless.....	57-58
#8849 ..... Zoji .....	Stainless.....	25	Cabinets.....	Aged Stainless.....	59
#16110..... Waterfalls.....	Stainless.....	26	Bar.....	Aged Stainless.....	60
#7854 ..... Niagara .....	Stainless.....	27	Island.....	Aged Stainless.....	61
#3688 ..... Lambert.....	Stainless.....	28-29	Sink Basin Aged Stainless.....		62
#6890 ..... Seneca .....	Stainless.....	30-31	Sink Base & Sink .....	Aged Stainless.....	63
#2786 ..... Shoemaker.....	Stainless.....	32-33	Floating Shelves.....	Aged Stainless.....	64
#2865 ..... Kirby .....	Stainless.....	34	Floating Shelves.....	Stainless.....	65
#4217 ..... Stojkowski .....	Stainless.....	35	Pantry Doors .....	Stainless.....	66
#7483 ..... Arthur.....	Stainless.....	36	Dining Table .....	Aged Stainless.....	67
#0932 ..... Arthur.....	Stainless.....	37	Conference Table .....	Swirled Stainless.....	68
#1306 ..... Century.....	Stainless.....	38	Counter Tops & Sink.....	Aged Copper .....	69
#141526			Backsplash .....	Aged Copper .....	70
113810..... Sterling .....	Stainless.....	39	Silver Rocket Grills & Cabinets .....		71-72

## Range Hood Options

### Available in:

304 #4 Stainless Steel  
 304 2B Stainless Steel  
 304 #8 Mirror Stainless Steel  
 Copper  
 Brass  
 Zinc  
 Mill Scale

Also available in different aging patinas.

We offer a choice of two high end blowers:  
 Zephyr and Vent-A-Hood

### Options:

Aging - See Patina Options  
 Buttons  
 Flat Trim  
 Standoff Trim  
 Single Radius  
 Double Radius  
 Trim Molding  
 Any Combination of Material, Patinas &  
 Trim Available  
 Insert with Fan & Lights  
 Custom fabrication to meet your specs.  
 for insert fan and lights

Brass



B3CSB-1

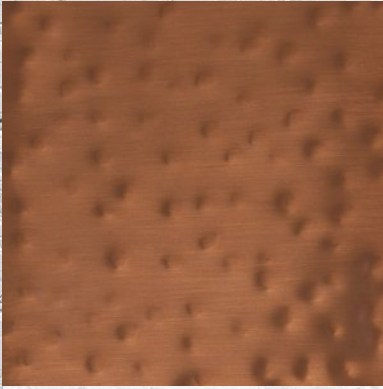


B3CSB

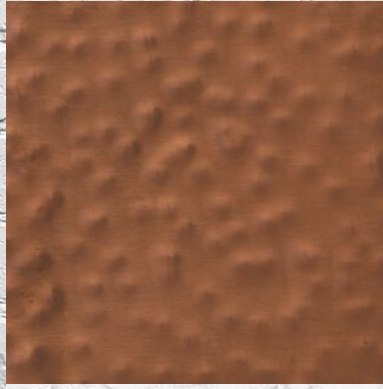


B3CSB-2

Copper



SHC-P



IO SDHC



C-SSB-JB

Zinc



CS4-S



#V-CG



CS4SD

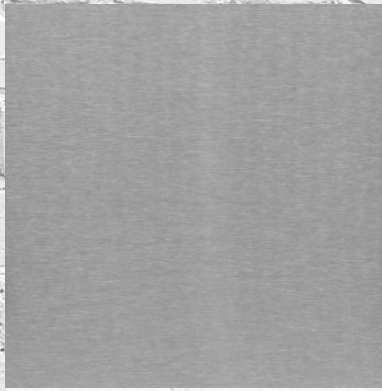


CS4S

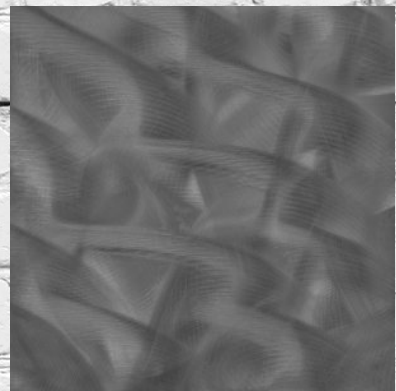
**#8SS is a mirror finish**

**See page 8 for an example  
of the mirror finish.**

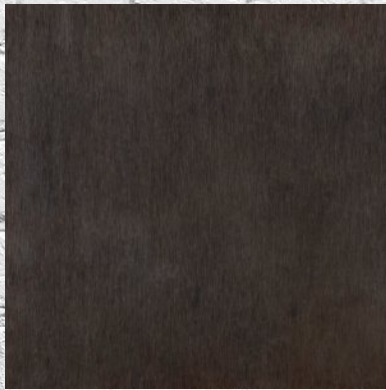
**#8SS**



**#4SS**



**2B-Swirl**



**#4SSW SSB**



**#2B-SSBM**



**#4SSBSR-F**



**#4SSBSR**



**#4SSBM**

**Stainless Steel**

Sample pack available on request.

*Call for pricing.*

Call for any custom patina requests.

*Sunrise Metal Shop reserves the  
right of variation in color + or - 10%.*

# Roberta

#8865



6

4SSBM

**Shown:** Aged Stainless Hood with Crown and  
Combination Trim  
Patina: #4SSBM  
Width: 42"

*See all available patina options on pages 3 - 5*

# Roberta

#4225



**Shown:** Aged Stainless Hood with Crown and  
Combination Trim  
Patina: #4SSBM  
Width: 60"

*See all available patina options on pages 3 - 5*

#4SSBM

7

# Sierra

#1733



8

#4SS-BSR

**Shown:** Aged Stainless Hood with Flat Trim  
Patina: #4SS-BSR  
Width: 48"

*See all available patina options on pages 3-5*

# Sierra

#6433



**Shown:** Aged Zinc Hood with Flat Trim  
Patina: #CS4-S  
Width: 48"

*See all available patina options on pages 3-5*



CS4-S

9

# Winona

#975



#8SS is a  
mirror finish

Body - 2B-SSBM

Trim - #8SS

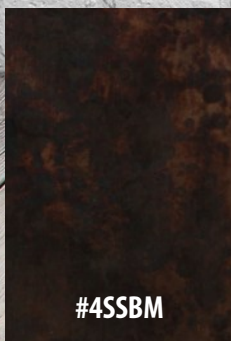
**Shown:** Aged Stainless Hood with Standoff Trim  
Patina: #2B-SSBM (body) #8SS (trim)  
Width: 54"

*See all available options on pages 3 - 5*



# King

#2282



#4SSBM

**Shown:** Aged Stainless Hood with Flat Vertical and Standoff Horizontal Trim  
Patina: #4SSBM  
Width: 30"

*See all available patina options on pages 3-5*

# Denver

#6404



**Shown:** Aged & Hammered Stainless Hood  
with Flat Trim  
Patina: #4SSBSR  
Width: 50"

*See all available patina options on pages 3-5*



#4SSBSR

# Millennium

#2609



Body - #4SS-BSR

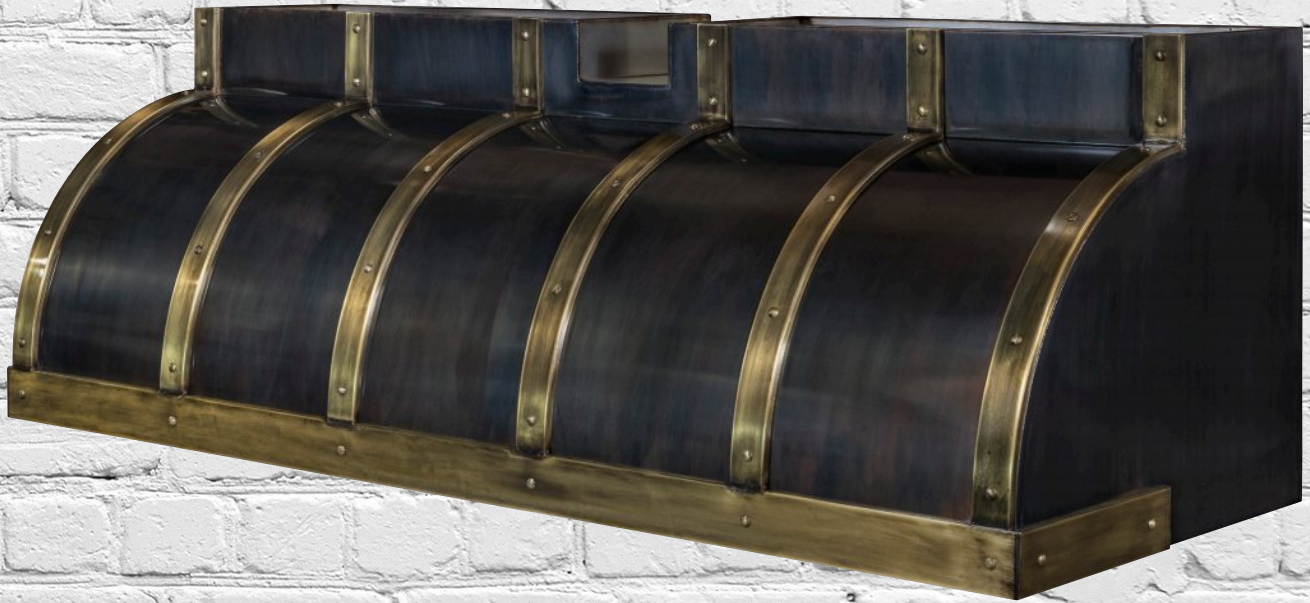
Trim - #4SSBM

**Shown:** Aged Stainless Hood with Standoff Trim  
Patina: #4SS-BSR (body) #4SSBM (trim)  
Width: 48"

*See all available options on pages 3 - 5*

# Sage

#1501



**Shown:** Aged Stainless Hood with Aged Brass Standoff Trim  
Patina: #2B-SSBM (body) B3CSB (trim)  
Width: 73"

*See all available options on pages 3 - 5*

Body - #2B-SSBM

Trim - B3CSB

# Ourray

#17551



Body - #2B-SSBM

Trim - Brass

**Shown:** Aged Stainless Hood with Brass Standoff Trim  
Patina: #2B-SSBM (body) Brass (trim)  
Width: 41½"

*See all available options on pages 3 - 5*

# Cascade

#7753



**Shown:** Aged Stainless Hood with Standoff Trim  
Patina: #2B-SSBM  
Width: 60"

*See all available patina options on pages 3-5*

#2B-SSBM

# Cascade

#1725



#8SS is a  
mirror finish

Trim - #8SS

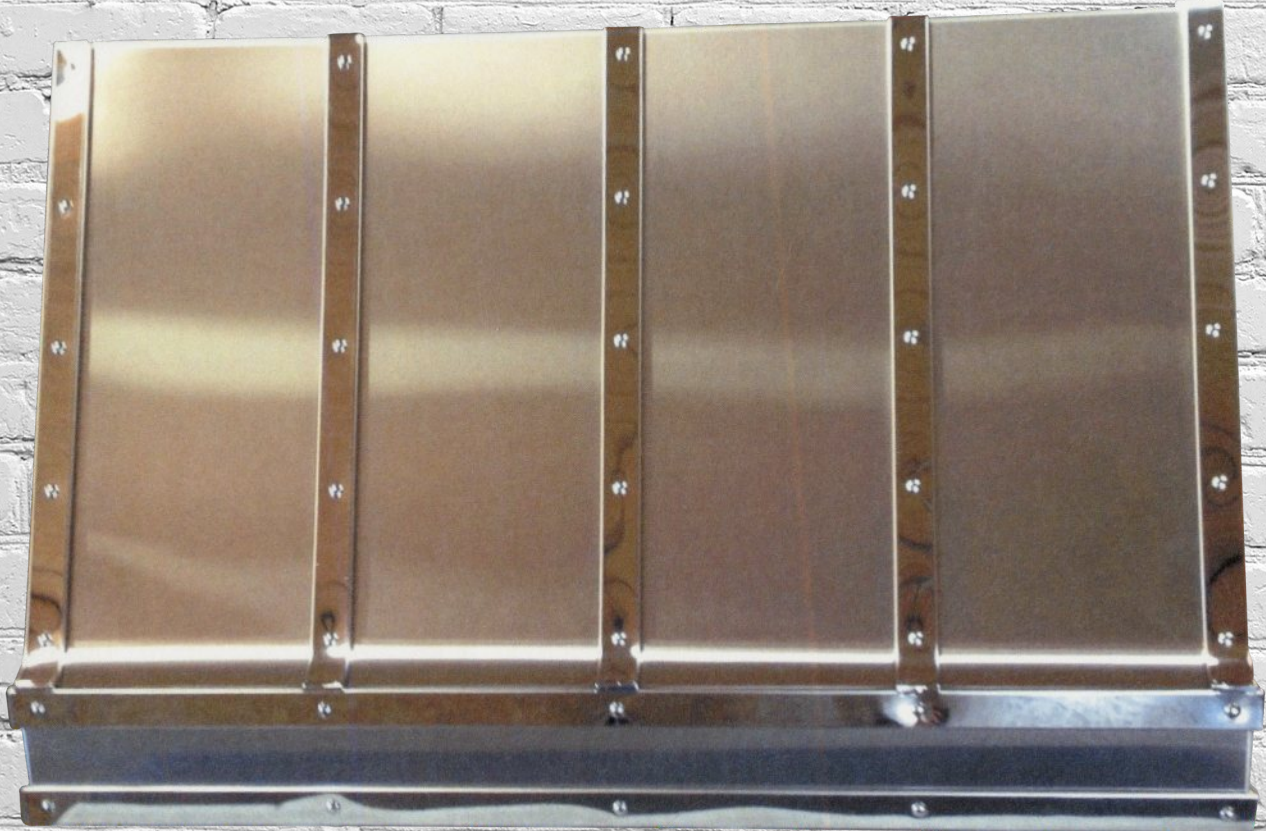
Body - #4SS

**Shown:** Stainless Hood with Standoff Trim  
Patina: #4SS (body) #8SS (trim)  
Width: 60"

*See all available options on pages 3 - 5*

# Adirondack

#8550



#8SS is a  
mirror finish

Body - #4SS

Trim - #8SS

**Shown:** Stainless Hood with Standoff Trim  
Patina: #4SS (body) #8SS (trim)  
Width: 48"

*See all available options on pages 3 - 5*



# Manhattan

#8610



**Shown:** Stainless Hood with Standoff Trim  
Patina: #4SS (body) #8SS (trim)  
Width: 54"

*See all available options on pages 3 - 5*

Body - #4SS

#8SS is a  
mirror finish

Trim - #8SS

# Manhattan

#5137



**Shown:** Stainless Hood with Standoff Trim  
Patina: #4SS (body) #10 SDHC (trim)  
Width: 70"

*See all available patina options on pages 3-5*

# Manhattan

#8252



**Shown:** Stainless Hood with Standoff Trim  
Patina: #4SS (body) #8SS (trim)  
Width: 30"

*See all available patina options on pages 3-5*

Body - #4SS

Trim - #8SS

# Manitoba

#1075



24

Body - #4SS

**Shown:** Stainless Hood  
Patina: #4SS  
Width: 30"

*See all available options on pages 3 - 5*

# Zojoji

#8849



**Shown:** Stainless Hood with Cable Rail  
Patina: #8SS  
Width: 48"

*See all available options on pages 3 - 5*

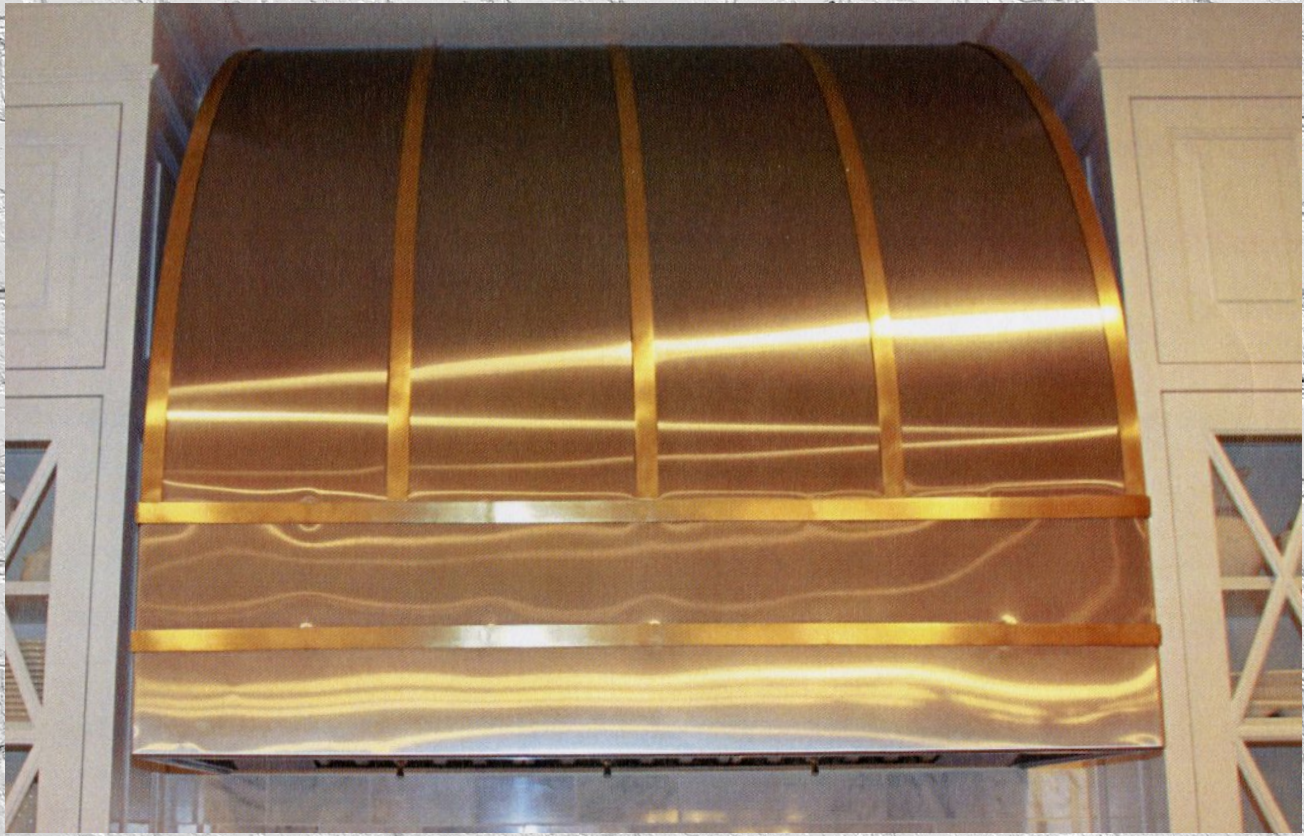
#8SS is a  
mirror finish

Body - #8SS

25

# Waterfalls

#16110



26

Body - #4SS

Trim - Brass

**Shown:** Stainless Hood with Brass Flat Trim  
Patina: #4SS (body) Brass (trim)  
Width: 66"

*See all available options on pages 3 - 5*

# Niagara

#7854



**Shown:** Stainless Hood with Copper Flat Trim  
Patina: #4SS (body) Copper (trim)  
Width: 30"

*See all available options on pages 3 - 5*

Body - #4SS

27

# Lambert

#3866



28

Body - #4SS

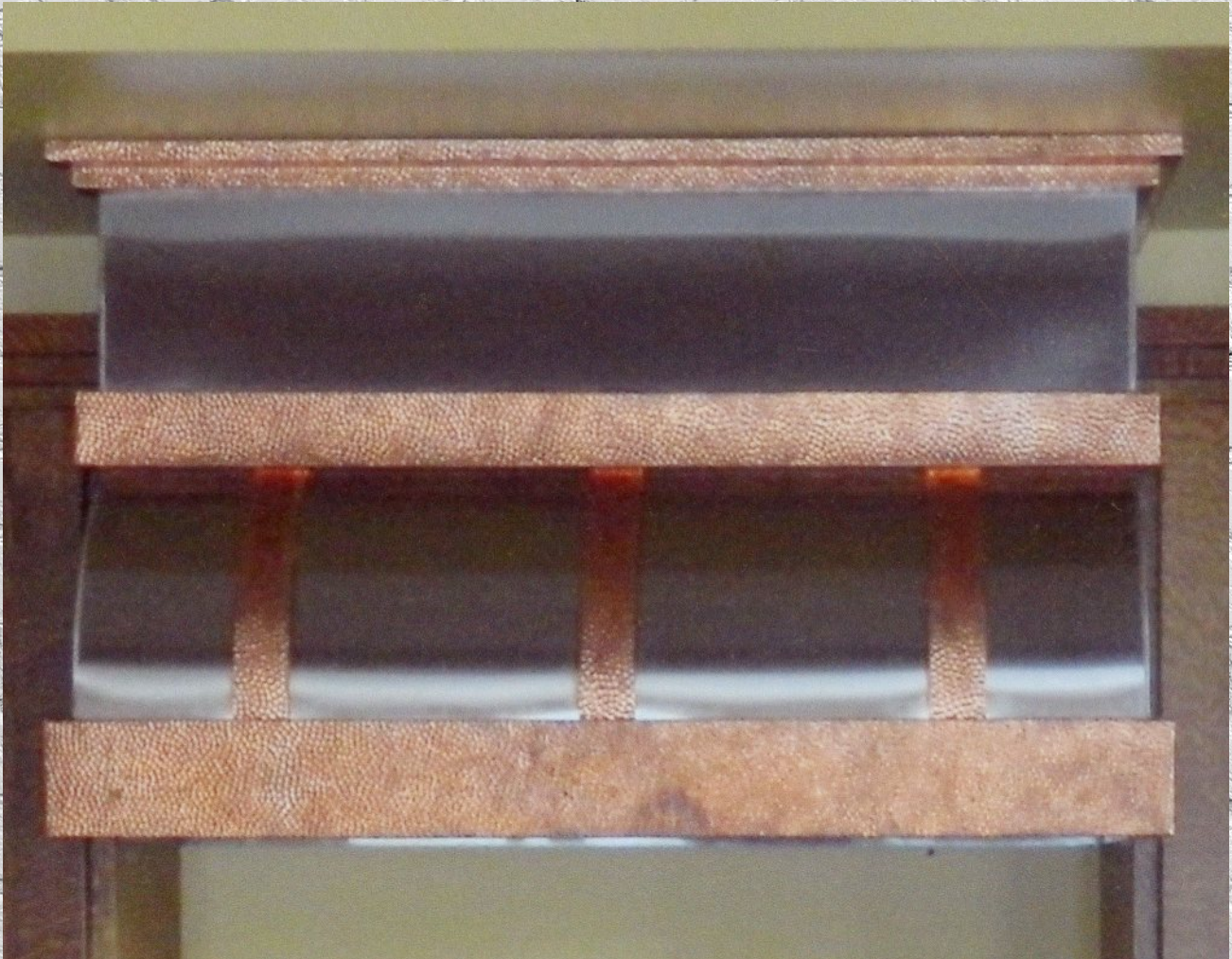
**Shown:** Stainless Hood with Copper Flat Trim  
Patina: #4SS (body) Copper & Wood (trim)  
Width: 30"

*See all available options on pages 3 - 5*



# Seneca

#6890



30

Body - #4SS

**Shown:** Stainless Hood with Hammered Copper Trim  
Patina: #4SS (body) Hammered Copper (trim)  
Width: 40"

*See all available options on pages 3 - 5*

# Shoemaker

#2786



#8SS is a  
mirror finish

Body - #4SS

Trim - #8SS

**Shown:** Stainless Hood with Standoff Trim  
Patina: #4SS (body) #8SS (trim)  
Width: 48"

*See all available options on pages 3 - 5*

# Kirby

#2865



#8SS is a  
mirror finish

Body - #4SS

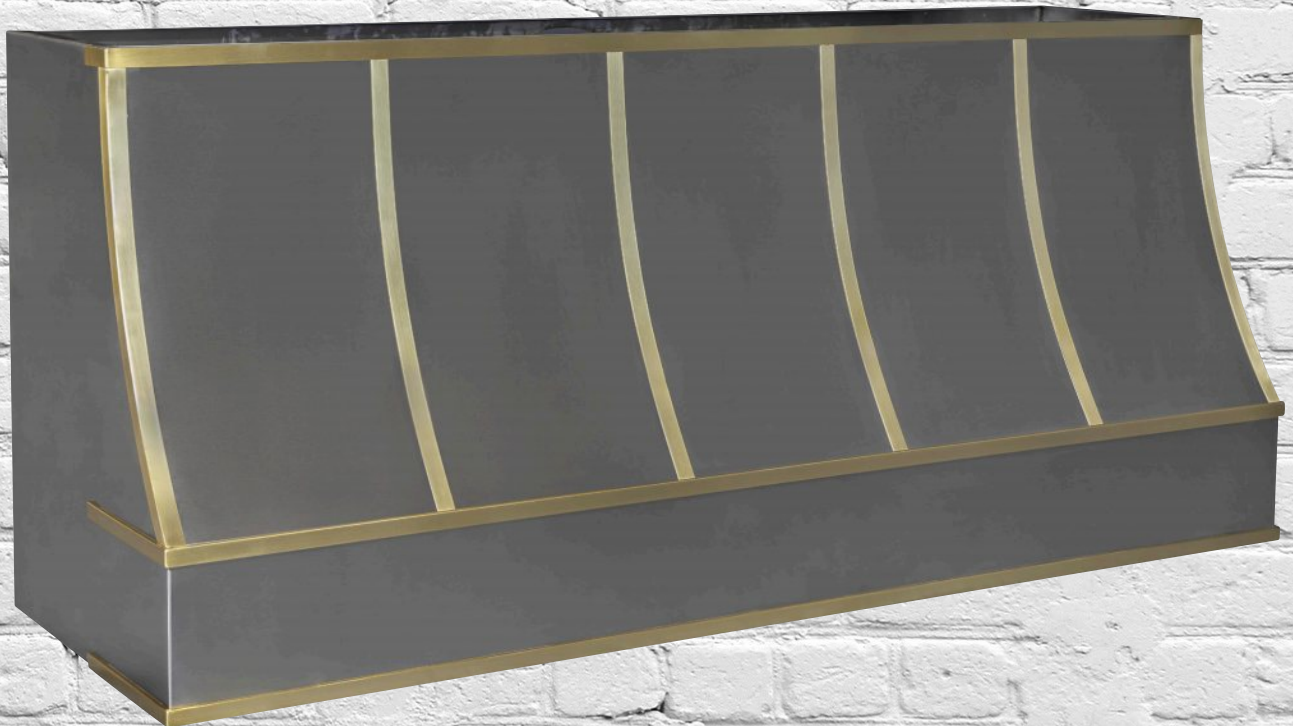
Trim - #8SS

**Shown:** Stainless Hood with Flat Trim  
Patina: #4SS (body) #8SS (trim)  
Width: 80"

*See all available options on pages 3 - 5*

# Stojkowski

#4217



**Shown:** Stainless Hood with Flat Vertical and Standoff Horizontal Trim  
Patina: #4SS (body) B3CSB-1 (trim)  
Width: 75"

*See all available patina options on pages 3-5*

Body - #4SS

Trim - B3CSB-1

35

# Arthur

#7483



36

Body - #4SS

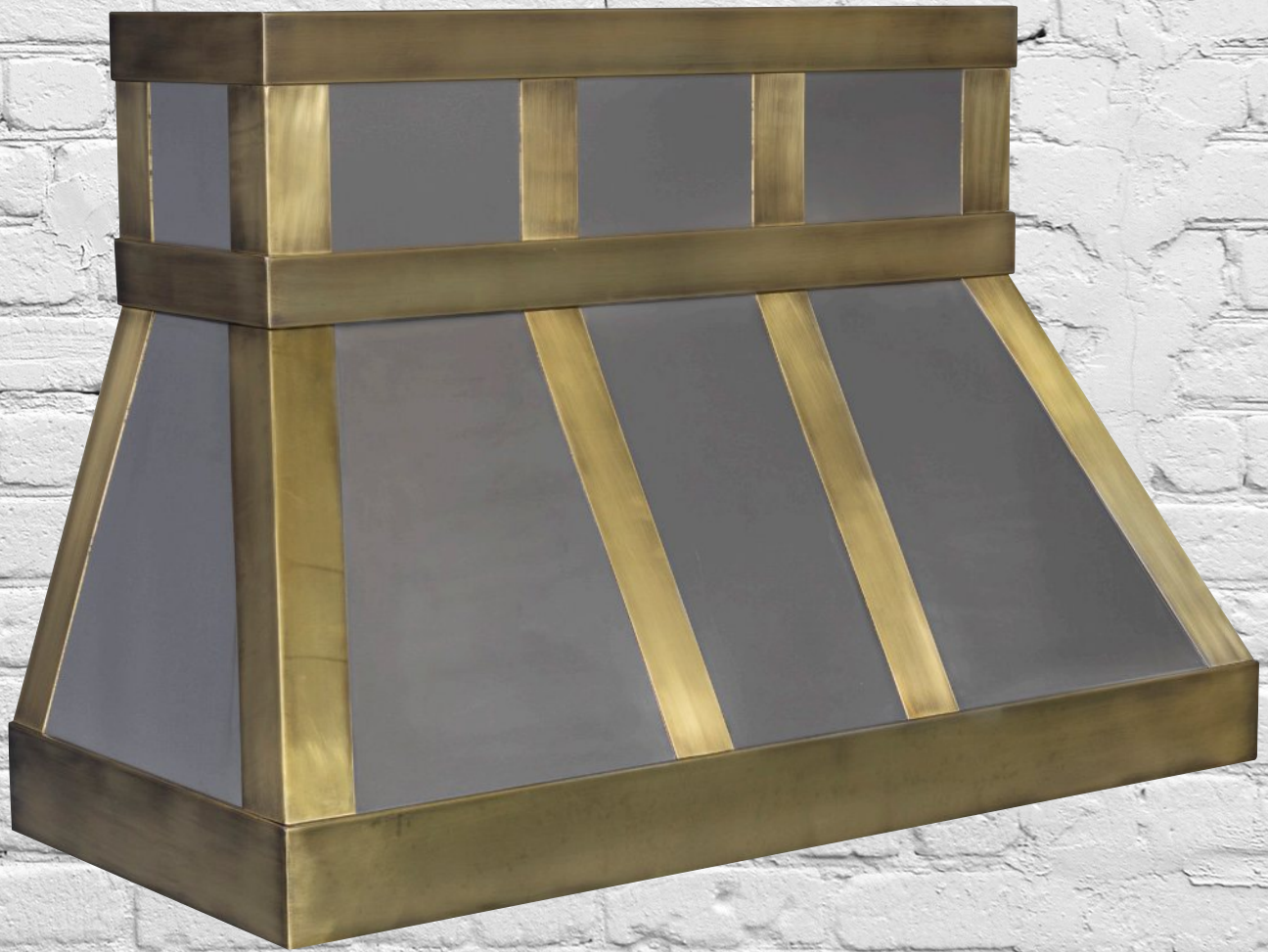
Trim - #8SS

**Shown:** #4 Stainless Hood with #8 Flat Vertical and Standoff Horizontal Trim  
Patina: #4SS (body) #8SS (trim)  
Width: 54"

*See all available patina options on pages 3-5*

# Arthur

#0932



**Shown:** #4 Stainless Hood with Flat Vertical and Standoff Horizontal Trim  
Patina: #4SS (body) B3CSB-1 (trim)  
Width: 54"

*See all available patina options on pages 3-5*

Body - #4SS

Trim - B3CSB-1

37

# Century

#1306



38

Body - #4SS

**Shown:** #4 Stainless Hood  
Patina: #4SS  
Width: 42"

*See all available patina options on pages 3-5*

# Sterling

#141526  
113810



**Shown:** Stainless Hood  
Patina: #4SS  
Width: 72"

*See all available options on pages 3 - 5*

Body - #4SS



# Key West

## Island Hood

#8505



40

Body - #4SS

Trim - B3CSB

**Shown:** Painted White Body with Aged Brass  
Flat Trim  
Patina: White Paint (body) B3CSB (trim)

*See all available patina options on pages 3-5*

# Fairhurst

#2789

**Shown:** Powder-coat Matte Black Hood with  
Brass Trim  
Width: 96"



#1303



**Shown:** Aged Zinc Hood with Aged  
Stainless Trim  
Patina: CS4-S (body) 4SSBSR (trim)  
Width: 30"

*See all available options on pages 3 - 5*

Body - CS4-S

Trim - 4SSBSR

# Montana

#12056



**Shown:** Oil Rubbed Bronze Hood with Molding and Standoff Trim  
- Patina: #Powder-coated (body)  
Oil Rubbed Bronze (trim)  
Width: 33"

*See all available options on pages 3 - 5*

# Pruno

#3875



**Shown:** Oil Rubbed Bronze Hood  
Patina: Oil Rubbed Bronze Powder-coat  
Blower compatible  
*See all available options on pages 3 - 5*

# Marion

#11670



**Shown:** Aged Copper Hood  
Patina: Aged Copper  
Width: 30"

*See all available options on pages 3 - 5*

# Pensliwinky

#2220



46

Body - CS4-S

**Shown:** Aged Zinc Hood with Standoff Trim  
Patina: CS4-S  
Width: 53"

*See all available options on pages 3 - 5*

# Grand Junction

#2170



**Shown:** Zinc Hood with Standoff Trim  
Patina: Original Zinc  
Width: 53"

*See all available options on pages 3 - 5*

# Blue Ridge

#6758



48

CS4-S

**Shown:** Aged Zinc Hood with Standoff Trim  
Patina: CS4S  
Width: 48"

*See all available patina options on pages 3-5*



# McKenzie 1

#2304



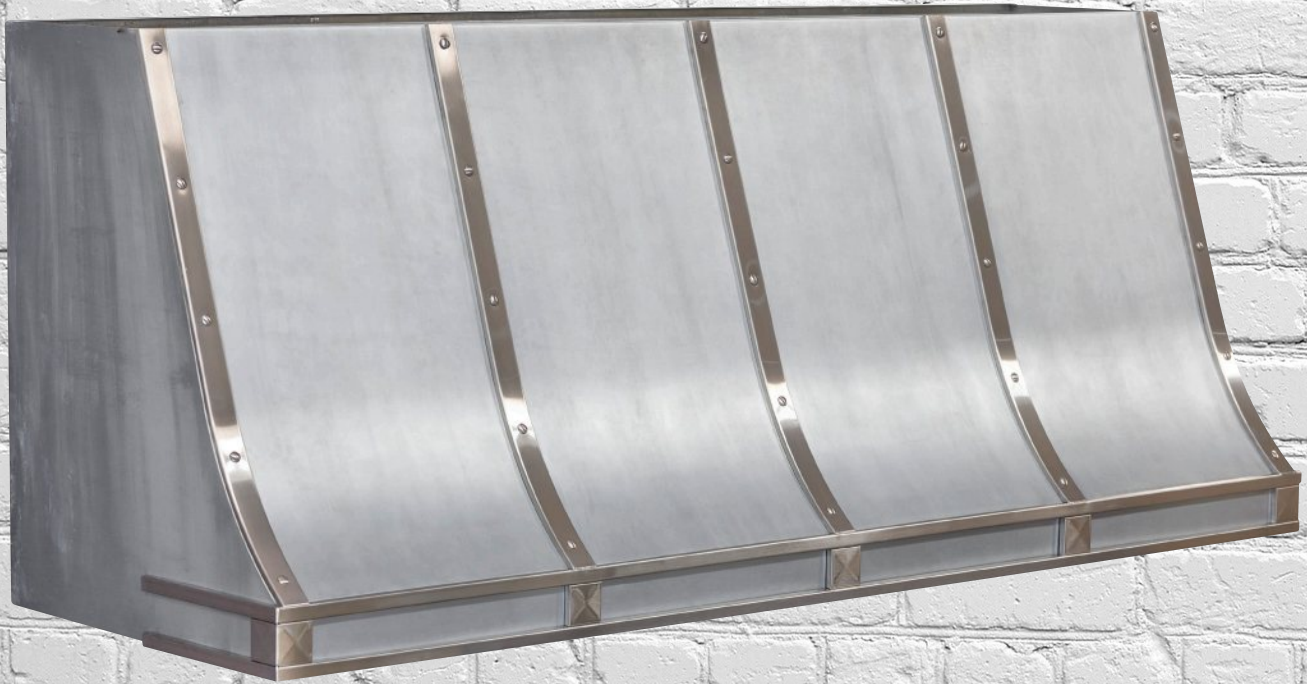
**Shown:** Aged Zinc Hood with #8 Standoff Trim  
and Rosettes  
Patina: Custom Finish (body) #8SS (trim)  
Width: 96"

*See all available options on pages 3 - 5*

Trim - CS4-S

# Mckenzie 2

#8492



50

Body - #V-CG

Trim - #4SS

**Shown:** Aged Zinc Hood with #4SS Standoff  
Trim and Rosettes  
Patina: V-CG (body) #4SS (trim)  
Width: 72"

*See all available options on pages 3 - 5*

# Sandusky

#3479



**Shown:** Aged Zinc Hood with Standoff Trim  
Patina: #V-CG (body) CS4-S (trim)  
Width: 48"

*See all available patina options on pages 3-5*

Body - #V-CG

Trim - CS4-S